



# PROFESSIONAL

## FTTX SOLUTION PROVIDER

lead the revolution in connectivity technology  
with our advanced fiber optic solutions

Shanghai Opti-Connectivity Technologies CO.,LTD

No. 1459 Gaotai Road, Jiading District, Shanghai, China

Tel: +86 17321363317

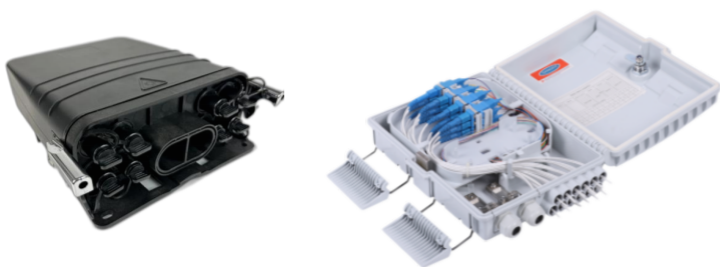
email: [market@open2fiber.com](mailto:market@open2fiber.com)

[www.open2fiber.com](http://www.open2fiber.com)



## ABOUT OPEN2FIBER

Welcome to Shanghai Opti-Connectivity Technologies CO.,LTD, commonly known as Open2Fiber. Here, we seamlessly integrate cutting-edge technology with innovation. Since our establishment in 2023, Open2Fiber has been dedicated to becoming an innovator in the field of fiber optic communication. Our mission is simple yet ambitious: to lead the revolution in connectivity technology with our advanced fiber optic solutions.



1.Fiber Termination Box



2.Dome Optic Splice Closure





# **FIBER** TERMINATION BOX

Focusing on  
FTTX equipment manufacturing



# 1. FIBER TERMINATION BOX



OTB-01A



OTB-01B



OTB-02B



O2B-04A



OTB-01C



OTB-01D



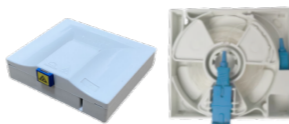
FTB-04A-1



FTB-06A-1



OTB-01E



OTB-01G





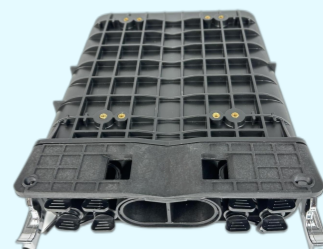
### FTB-08C

Capacity	8 cores	Accessible Cable Diameter	Φ8-Φ12mm
Material	ABS/PC+ABS	Protection Level	IP55
Dimension, W*H*D(mm)	249*203*53	Input Cable Method	Cutting
Inlets/Outlets	2+8 & 3+8	PLC Splitter	Tube & module type



### FTB-08D

Capacity	8 cores	Weight	1.45kg
Material	PP+GF	Protection Level	IP68
Dimension, W*H*D(mm)	269*237*94	Input Cable Method	Cutting/Uncutting
Inlets/Outlets	2/8	PLC Splitter	Tube & module type



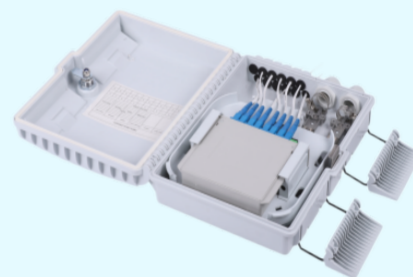
## FTB-12B

Capacity	12 cores	Accessible Cable Diameter	Φ7-Φ15mm
Material	ABS/PC+ABS	Protection Level	IP55
Dimension, W*H*D(mm)	230*215*65	Input Cable Method	Uncutting
Inlets/Outlets	2/12	PLC Splitter	Tube & module type



## FTB-12F

Capacity	12 cores & 8 cores	Accessible Cable Diameter	Φ7-Φ12mm
Material	ABS/PC+ABS	Protection Level	IP55
Dimension, W*H*D(mm)	268*202*82	Input Cable Method	cutting/Uncutting
Inlets/Outlets	2+12	PLC Splitter	Tube & module type



## FTB-16B

Capacity	16 cores	Accessible Cable Diameter	Φ8-Φ12mm
Material	ABS/PC+ABS	Protection Level	IP55
Dimension, W*H*D(mm)	311*237*104	Input Cable Method	Cutting/Uncutting
Inlets/Outlets	2/16	PLC Splitter	Tube & module type





## FTB-16C

Capacity	8 cores & 16 cores	Accessible Cable Diameter	Φ10-Φ18mm
Material	PP+GF	Protection Level	IP68
Dimension, W*H*D(mm)	380*243*130	Input Cable Method	Cutting/Uncutting
Inlets/Outlets	4+16 & 4+8	PLC Splitter	Tube & module type



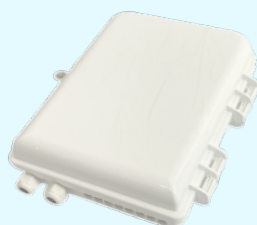
## FTB-16D

Capacity	8 cores & 16 cores	Accessible Cable Diameter	Φ8-Φ12mm
Material	ABS/PC+ABS	Protection Level	IP55
Dimension, W*H*D(mm)	290*180*105	Input Cable Method	Cutting/Uncutting
Inlets/Outlets	4+8 & 4+16	PLC Splitter	Tube & module type



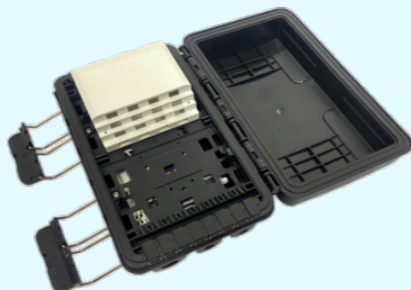
## FTB-16I

Capacity	16 cores	Accessible Cable Diameter	Φ8-Φ18mm
Material	ABS/PC+ABS	Protection Level	IP55
Dimension, W*H*D(mm)	210*126*50	Input Cable Method	Cutting/Uncutting
Inlets/Outlets	2/16	PLC Splitter	Tube & module type



## FTB-16N

Capacity	8 cores & 16cores	Accessible Cable Diameter	Φ7-Φ14mm
Material	ABS/PC+ABS	Protection Level	IP55
Dimension, W*H*D(mm)	285*180*118	Input Cable Method	Cutting/Uncutting
Inlets/Outlets	6+16	PLC Splitter	Tube & module type



## FTB-16T

Capacity	16cores	Accessible Cable Diameter	Φ7-Φ14mm
Material	ABS/PC+ABS	Protection Level	IP65
Dimension, W*H*D(mm)	340*204*123.5	Input Cable Method	Cutting/Uncutting
Outlets	16	PLC Splitter	Tube & module type



## FTB-16U

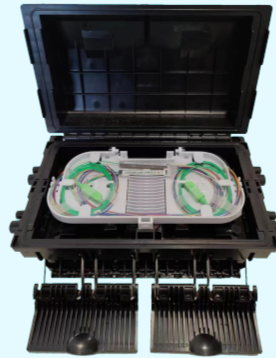
Capacity	16cores	Accessible Cable Diameter	Φ7-Φ14mm
Material	ABS/PC+ABS	Protection Level	IP65
Dimension, W*H*D(mm)	300*210*90	Input Cable Method	Cutting/Uncutting
Inlets/Outlets	4+16	PLC Splitter	Tube & module type





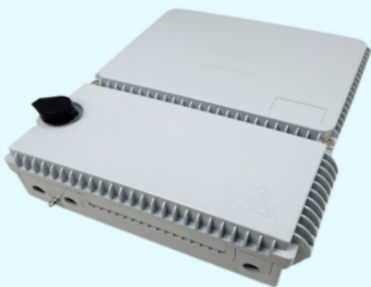
## FTB-16S

Capacity	16cores	Accessible Cable Diameter	Φ7-Φ14mm
Material	ABS/PC+ABS	Protection Level	IP65
Dimension, W*H*D(mm)	290*160*120	Input Cable Method	Cutting/Uncutting
Outlets	16	PLC Splitter	Tube & module type



## FTB-16R

Capacity	16cores	Accessible Cable Diameter	Φ7-Φ14mm
Material	ABS/PC+ABS	Protection Level	IP65
Dimension, W*H*D(mm)	343*292*97	Input Cable Method	Cutting/Uncutting
Outlets	3/16	PLC Splitter	module type



## FTB-W16F

Capacity	8 cores & 16 cores	Accessible Cable Diameter	Φ7-Φ14mm
Material	ABS/PC+ABS	Protection Level	IP65
Dimension, W*H*D(mm)	297*210*102	Input Cable Method	Cutting/Uncutting
Outlets	4/8 & 4/16	PLC Splitter	module type



## FTB-24E

Capacity	8 & 16 & 24 & 32 cores	Accessible Cable Diameter	Ø7-Ø14mm
Material	ABS/PC+ABS	Protection Level	IP65
Dimension, W*H*D(mm)	341*210*87 & 341*210*120	Input Cable Method	Cutting/Uncutting
Outlets	4/8 & 2/16 & 4/24	PLC Splitter	module type



## FTB-24G

Capacity	16 & 24 cores	Accessible Cable Diameter	Ø7-Ø14mm
Material	ABS/PC+ABS	Protection Level	IP65
Dimension, W*H*D(mm)	320*270*110	Input Cable Method	Cutting/Uncutting
Outlets	2/24	PLC Splitter	module type



## FTB-24L

Capacity	16 & 24 cores	Accessible Cable Diameter	Ø7-Ø14mm
Material	ABS/PC+ABS	Protection Level	IP65
Dimension, W*H*D(mm)	316*274*107	Input Cable Method	Cutting/Uncutting
Outlets	3/24	PLC Splitter	module type





Capacity	32 & 48 cores	Accessible Cable Diameter	Φ7-Φ14mm
Material	ABS/PC+ABS	Protection Level	IP65
Dimension, W*H*D(mm)	385*342*119	Input Cable Method	Cutting/Uncutting
Outlets	2+2	PLC Splitter	module type

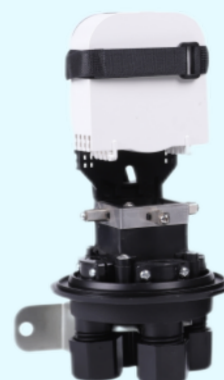


## 2. DOME OPTIC SPLICE CLOSURE



## SC-S048-01

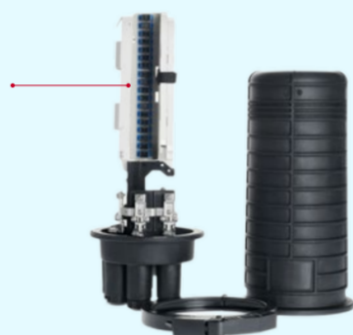
Max Capacity	48F		Inlets/Outlets	2/2
Material	PP/PC		Accessible Cable Diameter	Round:Φ16mm
Max Splice Trays	4*12F		Protection Level	IP68
Dimension (mm)	300*Φ118		Cable Port Sealing	Screw Mechanical



## SC-S048-02

Max Capacity	48F		Inlets/Outlets	2/4
Material	PP		Type of PLC	1:16 Micro PLC
Max Splice Trays	2*24F		Protection Level	IP68
Dimension (mm)	400*Φ260		Cable Port Sealing	Screw Mechanical/Heat Shrinkable

1:16 Micro PLC is available along with 18 pcs SC adaptors.



- ① Φ8 ~ 18mm uncut cable.
- ② Φ8 ~ 18mm cut cable.



Multi-ports grommets for SO48-02 series

## SC-S096-01

Max Capacity	96F		Inlets/Outlets	1/3
Material	PP/PC		Accessible Cable Diameter	Oval:Φ26mm; Round:Φ21mm
Max Splice Trays	4*24F		Protection Level	IP68
Dimension (mm)	410*Φ135		Cable Port Sealing	Heat Shrinkable





Max Capacity	120F	Inlets/Outlets	1/4
Material	PP	Type of PLC	1*1:32/2*1:16 Micro PLC
Max Splice Trays	5*24F	Protection Level	IP68
Dimension (mm)	480*Φ260	Cable Port Sealing	Screw Mechanical/Heat Shrinkable



SC-D144-03

Max Capacity:	Max Splice Trays :	Dimension (mm)	Material	PP
144F(Bundle cable)	4*36F	525*Φ225	Inlets/Outlets	1/6
432F(Ribbon cable)	6*72F	525*Φ225	Protection Level	IP68
			Cable Port Sealing	Heat Shrinkable



SC-D240-01

Max Capacity:	Max Splice Trays :	Dimension (mm)	Material	PP
240F(Bundle cable)	10*24F	480*Φ260	Inlets/Outlets	1/6
720F(Ribbon cable)	10*72F	480*Φ260	Protection Level	IP68
			Cable Port Sealing	Heat Shrinkable



Max Capacity:	Max Splice Trays :	Dimension (mm)	Material	PP
144F	12*12F/24*6F	400*Φ270	Protection Level	IP68
360F	30*12F/60*6F	500*Φ270	Type of PLC	2*1:4 / 1*1:8 Micro PLC
672F	56*12F	625*Φ270		

SC-D144-05      SC-D360-01      SC-D672-01

Optional splice trays to adapt for Micro PLC

Screw mechanical or heat shrinkable can be optional

Inlets/Outlets: 1/16

- 1 Φ10 ~ 25mm uncut cable (1 port)
- 2 Φ14 ~ 22mm cut cable (4 ports)
- 3 Φ8 ~ 16mm cut cable (12 ports)

Heat shrinkable seal

---

Screw mechanical seal

Inlets/Outlets: 1/9

- 1 Φ8 ~ 17.5mm cut cable (7 ports)
- 2 Φ10 ~ 22mm uncut cable (1 port)
- 3 2 ports for soft cable

Max Capacity:	Max Splice Trays :	Dimension (mm)	Material	PP
408F	34*12F	480*Φ270	Protection Level	IP68
480F	40*12F	500*Φ270		
576F	48*12F	600*Φ270		

SC-D480-01  
Heat shrinkable seal

Inlets/Outlets: 1/16

- 1 Φ10 ~ 25mm uncut cable (1 port)
- 2 Φ14 ~ 22mm cut cable (4 ports)
- 3 Φ8 ~ 16mm cut cable (12 ports)

---

SC-D408-01 & SC-D576-01  
Heat shrinkable seal

Inlets/Outlets: 1/6

- 1 Φ10-18mm uncut cable (1 oval port)
- 2 Φ8-18mm cut cable (6 round ports)



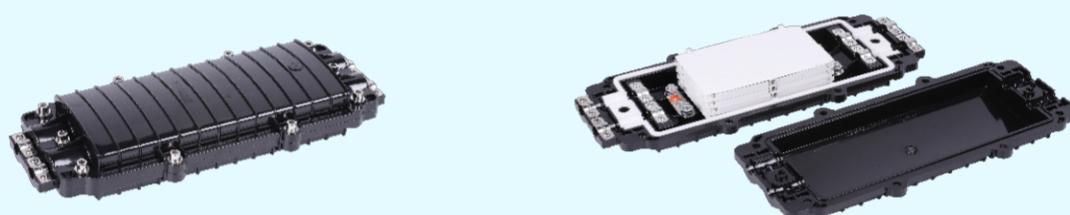
## SC-H048-01

Max Capacity	48F	Inlets/Outlets	1/1
Material	PP/PC	Accessible Cable Diameter	Round:Φ14-19mm
Max Splice Trays	2*24F	Protection Level	IP68
Dimension L*W*H(mm)	255*165*90	Cable Port Sealing	Screw Mechanical



## SC-H048-04

Max Capacity	48F	Inlets/Outlets	2/2
Material	PP/PC	Accessible Cable Diameter	Round:Φ7-14mm
Max Splice Trays	4*12F	Protection Level	IP68
Dimension L*W*H(mm)	406*170*75	Cable Port Sealing	Screw Mechanical



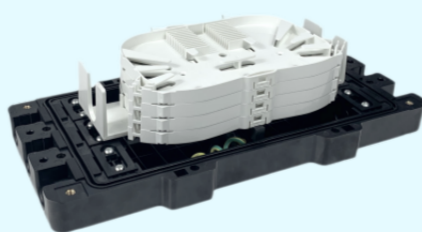
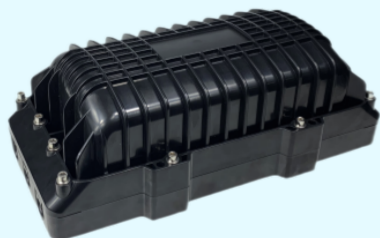
## SC-H144-11

Max Capacity	144F	Inlets/Outlets	3/3
Material	ABS/PC+ABS	Accessible Cable Diameter	Round:Φ7-18mm
Max Splice Trays	6*24F	Protection Level	IP68
Dimension L*W*H(mm)	465*190*120	Cable Port Sealing	Screw Mechanical



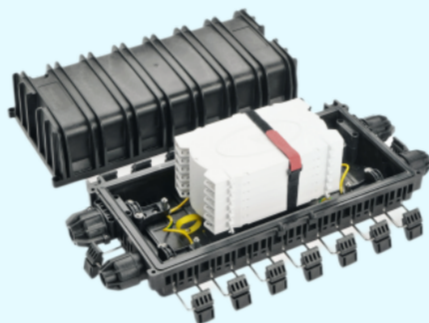
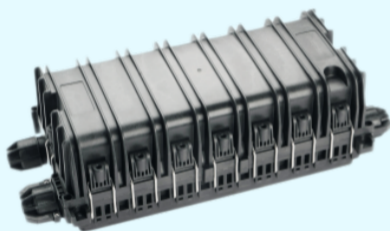
SC-H144-11

Max Capacity	120F	Inlets/Outlets	3/3
Material	ABS/PC	Accessible Cable Diameter	Round:Φ9.6mm、Φ12.3mm、Φ14.6mm
Max Splice Trays	5*24F	Protection Level	IP68
Dimension L*W*H(mm)	369*186*146	Cable Port Sealing	Screw Mechanical



SC-H144-11

Max Capacity:	Max Splice Trays :	DimensionL*W*H (mm)	Material	PP
72F	3*24F	490*200*120	Protection Level	IP68
144F	6*24F	520*220*150	Inlets/Outlets	2/2
432F	6*72F	520*220*150	Accessible Cable Diameter	Φ10-Φ18mm
			Cable Port Sealing	Screw Mechanical

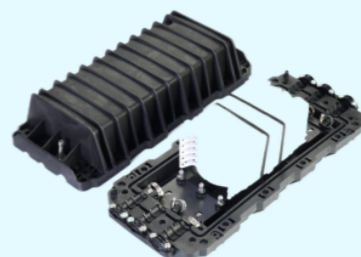


Box body is locker with buckles

Bath ends are sealed with nuts

SC-H144-11

Max Capacity:	Max Splice Trays :	DimensionL*W*H (mm)	Material	PP
144F	6*24F	515*217*120	Protection Level	IP68
288F	6*48F	515*217*150	Inlets/Outlets	3/3
			Accessible Cable Diameter	Φ10-Φ20mm
			Cable Port Sealing	Screw Mechanical







**OPEN2FIBER** is a company focusing on optical fiber to the home (FTTH) applications



**OPEN2FIBER**

Email: [market@open2fiber.com](mailto:market@open2fiber.com)

TEL: +86 17321363317